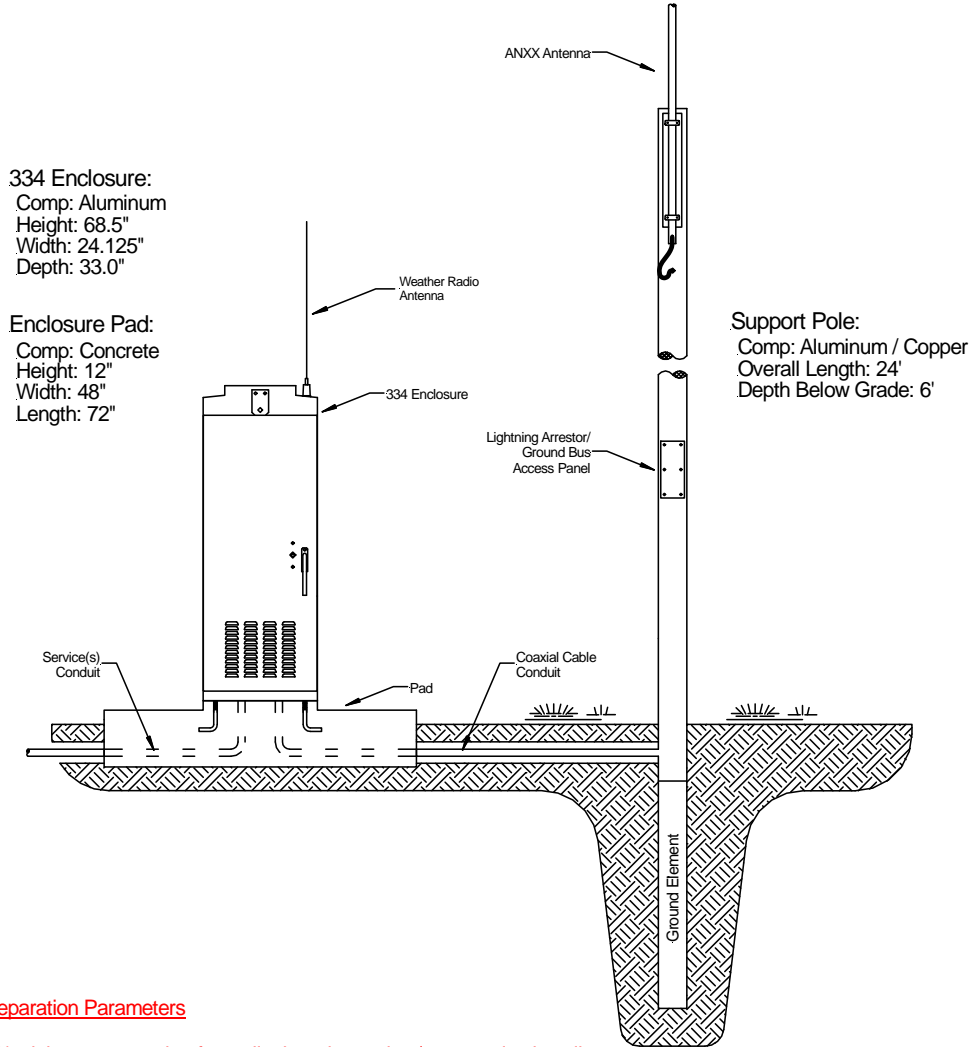


Information Station Specialists, Inc.	
ALERT AM / Vertical Profile Antenna Isolated Installation - Elevation View	
Geoff Penna	2.43
02/05	Copyright 2005, Information Station Specialists, Inc. All rights reserved.



Separation Parameters

50' minimum separation from all other electronics / communications lines and systems and buildings that house them. For nearby objects taller than 20', separation should exceed the standing height of the object (example: separate from a 100' tree by at least 100').