



PRODUCT INFORMATION SHEET

Component InfOspot Range Extender Outdoor Antenna & Tuner

Part Number RE2.5

Image



Description The Range Extender System increases the effective signal range of an InfOspot (Talking House) Radio Transmitter from hundreds to more than a thousand feet by providing a simple, professional means of installing the transmitting antenna outdoors in a weatherproof package. The InfOspot line of products is unique as the only such license-free system certified under FCC part 15.219 with a variable length of coaxial cable in its approved design. The Range Extender Outdoor Antenna and Tuner are part of a complete InfOspot Radio System.

Specifications	Power	Up to 100 MW.
	Frequency	540-1700 kHz AM.
	Typical Signal Range	Up to 2500'. Varies with mounting height and environment. 20' mounting height recommended.
	Mounting Location	Top of mast, pipe or pole, allowing Tuner and Antenna to be positioned entirely above the mounting structure with no lateral obstructions.
	Coaxial Cable	RG6 (25' provided) with F attached connectors. May be extended up to 100'. Longer lengths are possible, based on frequency.

All products described are subject to availability based on manufacturing capacity and shipping dates. While every effort has been made to ensure the accuracy of all information, ISS does not accept liability for any errors or omissions and reserves the right to change information as needed. These specifications may be changed without notice.

© 2020 Information Station Specialists, Inc. All rights reserved.

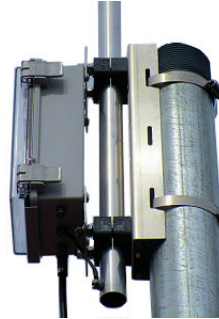


PRODUCT INFORMATION SHEET

Antenna 105" vertical antenna with 3" feedline (2.75 meters total). Vertical antenna: 1.0" tapering to 7/8". Aluminum tube, telescoping. Feedline: high flexibility; single, stranded copper conductor in PVC jacket. Ground line: not provided.

Antenna Insulators (2) Plastic, split block clamp design, 1.0" ID.

Antenna Mount



Aluminum "C" channel: H 10.5", W 2.5", D 1 3/16". With mounting holes (for flat surfaces) and strap slots (for pipe).

The Range Extender Antenna's universal channel mount can be attached to the top of various mounting supports, such as a pipe, as shown.

Antenna Tuner Dimensions: H 8.0", W 4.5", D 2.75". Construction: polycarbonate with see-through access door, lockable. Controls: RF meter, frequency range switch, tuning control. Connections: coax (F) connector, antenna bolt, lightning ground bolt. Includes hardware for integration with Antenna Mount.

Hardware Stainless steel and/or corrosion resistant.

Exposed Parts Aluminum.

Certification Made in the USA. Talking House FCC Certification DLB5LLL98.

FCC License Not required if installed per FCC Rules Part 15.219.

Illustrated Instructions Included.

Shipping Weight 7.0 lbs with cable and packaging, one container.

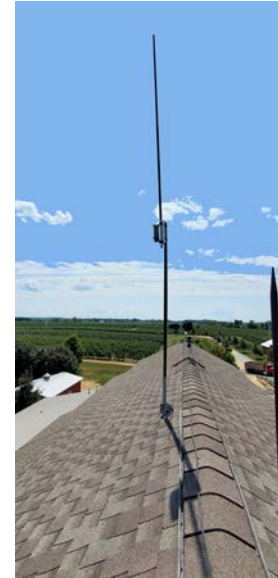
All products described are subject to availability based on manufacturing capacity and shipping dates. While every effort has been made to ensure the accuracy of all information, ISS does not accept liability for any errors or omissions and reserves the right to change information as needed. These specifications may be changed without notice.

© 2020 Information Station Specialists, Inc. All rights reserved.



PRODUCT INFORMATION SHEET

Installation



The InfOspot's Range Extender (Antenna and Tuner) must be mounted to the very top of a pole or mast. It should not be side-mounted on a mounting structure such as a wall, tower or pole. This will cause the antenna's signal to be dissipated into the mounting structure.

For example, attaching the InfOspot Antenna and Tuner to a stub just above a roof surface (left), or to the top of a wall or gable can yield disappointing results. Instead, attach it to the top of a freestanding pole or mast (right photo) which allows the tuner and antenna to be elevated well above the mounting structure.

In the above example, the reported range was less than 100 feet when installed on the short stub (left photo); when raised up on the mast at the same location (right photo), the signal could be detected more than a mile down the road and covered the immediate property well.

All products described are subject to availability based on manufacturing capacity and shipping dates. While every effort has been made to ensure the accuracy of all information, ISS does not accept liability for any errors or omissions and reserves the right to change information as needed. These specifications may be changed without notice.

© 2020 Information Station Specialists, Inc. All rights reserved.